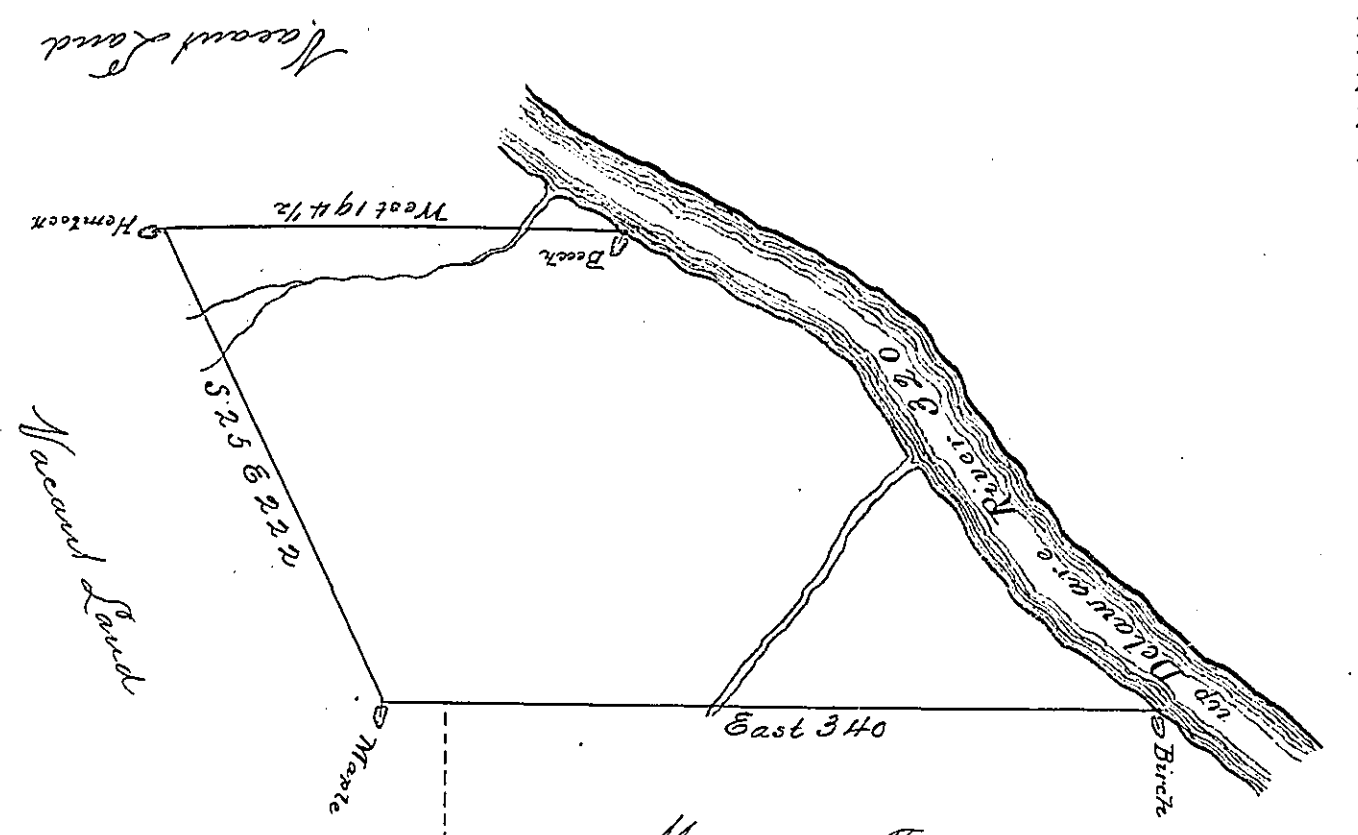


The Bearing & Distance  
up Delaware are

|               |
|---------------|
| N 57 W 64     |
| N 41 W 60     |
| N 35 W 91     |
| N 64 1/2 W 92 |
| N 59 W 13     |



William Forbes

By Virtue of a Warrant Dated the 17<sup>th</sup> Day of March 1774 Surveyed by 17<sup>th</sup> of June 1775 to William Norton the above Described Tract of Land Situate on the West side of the River Delaware twelve miles above Station Rock in Northampton County containing Three hundred and twenty eight Acres and the Allowance of Six p Cent &c<sup>e</sup>

p Geo. Palmer D.S.

Now Wayne County

To John Lukens Esq<sup>r</sup>  
Surveyor General

IN TESTIMONY that the above is a copy of the original remaining on file in the Department of Internal Affairs of Pennsylvania, made conformably to an Act of Assembly approved the 16th day of February, 1833, I have hereunto set my Hand and caused the Seal of said Department to be affixed at Harrisburg, this twenty eighth day of June 1895

*James W. Latta*  
Secretary of Internal Affairs.